

CURRENT TRANSFORMER PRODUCT CATALOG



World Class Energy Management Solutions

NOTES

Company Profile.....	1
Current Transormer Overview.....	2
Monitoring and Measuring Current Transformers.....	3-4
DC Immune Current Transformers.....	5-6
Split-Core Current Transformers	7-8
General Purpose Current Transformers.....	9
Global Contacts and Standards	10
Part Number Coding	11



About KG Technologies

Switch • Measure • Protect

KG Technologies, founded in 1999, is dedicated to innovative development and high quality/high volume manufacturing of latching relays for the Global Energy Market. We are a preferred supplier due to our ability to provide value-add, cost effective solutions to our customers with the highest quality global standards, and flexible delivery. For our customers, this translates into a significant savings in cost.

In 2015, Hongfa Group, the largest relay manufacturer in the world, acquired KG Technologies broadening our product line with a variety of relays including power, latching and industrial as well as Current Transformers (CTs) and Smart Circuit Breakers.

The combined companies have become the largest producer of latching relays in the world. As we continue to grow we will add additional Energy Management Solutions to our portfolio.

20 +
years



Quality Statement

KG Technologies develops reliable products that meet the world's highest energy standards (UL, IEC and ANSI) at the best cost for our customers. Our focus on the best value extends through our dependable manufacturing and logistical capabilities. This approach gives us the unique ability to produce large volume orders and dropship them anywhere in the world. We take pride in having one of the lowest failure rates in the industry.



Best in Class Performance

***Our Current Transformers (CTs) are
'Best in Class Performance'
at a Very Low Current Loss***

KG Technologies now offers an extensive CT product line for power metering and monitoring applications (ANSI/IEC). The various types of CT's included single and poly-phase bases, potted and un-potted, pins or lead wire termination, magnetic shielding. KG's portfolio is growing and providing a higher level of value add and cost savings to our customers.

Headquartered in the USA, we are a global company with a team of sales representatives and engineers experienced and ready to meet your needs.

***KG works with you so that our products
work for you!***



Monitoring and Measuring Current Transformers (CTs)

Description

We offer an extensive line of Current Transformers for Power Metering and Monitoring applications. We specialize in developing CTs that meet industry needs in terms of accuracy and mechanical constraints. Our Current Transformers are designed and tested to meet ANSI and IEC requirements. Our product line includes potted and un-potted versions, as well as termination pins or lead wires or mounted on a primary wire. All CTs are available with magnetic shields used for preventing tampering and are highly linear throughout the entire dynamic current range. KG CTs offer best in class performance at a very low current loss.

Application

- Single-phase and poly-phase watt-hour meter
- Digital display monitoring instruments
- Anti-theft electric watt-hour meters
- Data Logger in Digital Fault Recorders
- EV charge stand / cable
- IoT current measurement and control

Features

- Current range from 5 to 240 Amps
- Accuracy class 0.1 and 0.5 as per ANSI C12.20 or IEC 62053-22
- Lightweight, small size, strong insulation ability, moisture-proof and shock-proof
- Best low current sensitivity and stability
- Excellent linearity and precision
- Consistent performance over temperature changes
- UL Recognized
- RoHS compliant materials and processes
- Available customizations include adding burden resistors and external labels

KG can design and produce CTs to your specific requirements.

Contact us at techinfo@kgtechnologies.net to discuss your application.

Monitoring and Measuring Current Transformers (CTs)

Part #	Primary / Secondary Current	Max Current	Ratio	Accuracy Class	
KG-MCT007	5A/5mA 10A/10mA 10A/5mA 20A/20mA	30A 60A 100A 100A	1:1000 1:1000 1:2000 1:2000	0.2 0.2 0.1 0.1	
KG-MCT009	20A/100mA 20A/100mA	20A 20A	1:2000 1:2000	0.5 1.0	
KG-MCT010	20A/8mA 100A/100mA 200A/100mA 120A/48mA	200A 120A 240A 120A	1:2500 1:1000 1:2000 1:2500	0.1 0.2 0.2 0.1	
KG-MCT016	1.5A/0.75mA 1.5A/0.75mA 5A/2.5mA 5A/2.5mA 10A/5mA 10A/5mA	6A 6A 50A 50A 60A 60A	1:2000 1:2000 1:2000 1:2000 1:2000 1:2000	0.1 0.2 0.1 0.2 0.1 0.2	
KG-MCT017	10A/10mA 10A/5mA	100A 100A	1:1000 1:2000	0.2 0.2	
KG-MCT018	10A/10mA 10A/5mA	100A 100A	1:1000 1:2000	0.2 0.2	
KG-MCT102	5A/5mA 10A/10mA 20A/20mA 20A/10mA	30A 60A 100A 120A	1:1000 1:1000 1:1000 1:2000	0.1 0.1 0.1 0.1	
KG-MCT103	1.5A/5mA	6A	1:300	0.1	
KG-MCT120	20A/8mA	120A	1:2500	0.5/1.0	
KG-MCT226A	5A/2.5mA 5A/2.5mA 5A/5mA	20A 20A 20A	1:2000 1:2000 1:1000	0.1 0.2 0.2	
KG-MCT226B	20A/100mA 20A/100mA	240A 240A	1:2000 1:2000	0.5 1.0	
KG-MCT406	5A/2.5mA 5A/2.5mA 5A/5mA 10A/4mA 20A/8mA 10A/4mA	40A 40A 20A 40A 40A 40A	1:2500 1:2500 1:1000 1:2500 1:2500 1:2500	0.1 0.2 0.2 0.1 0.1 0.1	
KG-MCT407	10A/5mA 10A/10mA 10A/5mA	100A 100A 60A	1:2000 1:1000 1:2000	0.1 0.2 0.1	

Note: The Burden Resistor voltage should remain below 500mV at the CT's maximum secondary current. For additional information please contact KG Technologies.

Description

This series of Current Transformers have been designed for energy devices. They measure current, power and energy which requires high or medium accuracy and low phase error. The products meet the DC and harmonics requirements of IEC 62053-21, and are characterized by high linearity throughout the entire dynamic current range with very low current loss.

This product line offers both a Single Core Version, that features best in class accuracy and performance, and a lower cost Dual Core Version that supports lower accuracy and cost requirements.

Application

- Single-phase and poly-phase watt-hour meter
- Digital display monitoring instruments
- Anti-theft electricity watt-hour meters
- Data logger in digital fault recorders
- EV charge stand / cable
- IoT current measurement and control

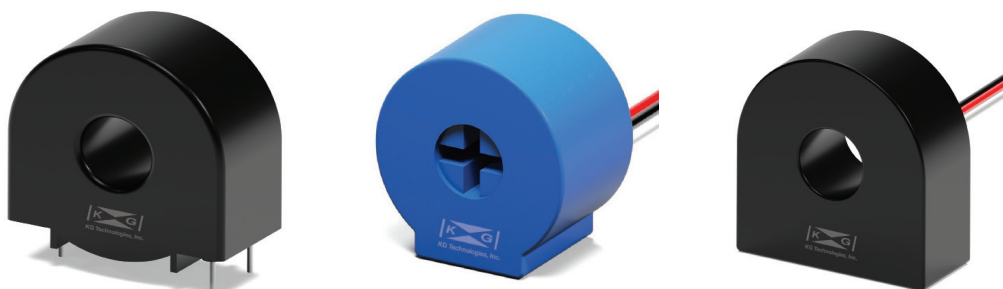
Features



- Current range from 5 to 120 Amps
- Accuracy options: 0.1% or 0.2%
- Excellent performance in DC Immunity
- Lightweight, small size, strong insulation ability, moisture-proof and shock-proof
- UL Recognized
- RoHS compliant materials and processes
- Consistent performance over temperature changes
- Excellent linearity and precision

KG can design and produce CTs to your specific requirements.

Contact us at techinfo@kgtechnologies.net to discuss your application.

DC Immune CT Product Offering



Part Number	Primary / Secondary Current	Max Current	Ratio	Accuracy Class	
KG-DCT-501	100A/40mA	113A	1:2500	0.1	
KG-DCT-502	100A/40mA	113A	1:2500	0.1	
KG-DCT-602	5A/2mA 5A/2mA 10A/4mA 10A/4mA	60A 60A 60A 60A	1:2500 1:2500 1:2500 1:2500	0.1 0.2 0.1 0.2	
KG-DCT-603	5A/2mA 5A/2mA 10A/4mA 10A/4mA 10A/4mA 10A/4mA	30A 30A 60A 60A 80A 80A	1:2500 1:2500 1:2500 1:2500 1:2500 1:2500	0.1 0.2 0.1 0.2 0.1 0.2	
KG-DCT-615	20A/8mA 20A/8mA	120A 120A	1:2500 1:2500	0.1 0.2	
KG-DCT-629	5A/2mA	60A	1:2500	0.1	Image N/a
KG-DCT-630	5A/2mA	100A	1:2500	0.1	Image N/a
KG-DCT-632	10A/4mA	60A	1:2500	0.1	Custom - Contact KG
KG-DCT-633	10A/4mA	60A	1:2500	0.1	Custom - Contact KG

Note: The Burden Resistor voltage should remain below 500mV at the CT's maximum secondary current. For additional information please contact KG Technologies.

Split-Core CT Product Offering

Description

The Split-Core CT series, contains two types of CTs: Miniature and Power. The output range for Miniature CT is (2.5mA - 80mA) with AC input current up to 600A. The output for the Power CT is 5A with AC input current up to 6000A.

The Split Core series can be easily installed without disconnecting the primary conductors.

Application





- Power distribution line monitoring
- Three phase balance control
- Building and factory energy management
- Panel board monitoring
- Electronic multi-function watt-hour meter and protection for instruments and meters
- General measurement and protection for uninterruptible power systems

Features






- Accuracy options: 0.5% or 1.0% (measured at 5% to 120% of rated current)
- Iron core is separable, with high accuracy and low magnetic circuit loss
- Small size, lightweight, customizable, easy installation
- No disassembly required of the bus installation under live condition - will not interrupt operations

KG can design and produce CTs to your specific requirements.

Contact us at techinfo@kgtechnologies.net to discuss your application.

Part Number	Primary / Secondary Current	Max Current	Ratio	Accuracy Class	
KG-KCT06	5A/2.5mA	5A	1:2000	1.0	
KG-KCT10	20A/10mA 20A/10mA 60A/20mA 60A/20mA	20A 20A 60A 60A	1:2000 1:2000 1:3000 1:3000	0.5 1.0 0.5 1.0	
KG-KCT16	100A/20mA	120A	1:5000	1.0	
KG-KCT23	100A/1A 100A/5A 150A/1A 150A/5A 200A/1A 200A/5A 250A/1A 250A/5A 300A/1A 300A/5A 400A/1A 400A/5A	120A 120A 180A 180A 240A 240A 300A 300A 360A 360A 480A 480A	1:100 1:20 1:150 1:30 1:200 1:40 1:250 1:50 1:300 1:60 1:400 1:80	0.5/1.0 0.5/1.0 0.5/1.0 0.5/1.0 0.5/1.0 0.5/1.0 0.5/1.0 0.5/1.0 0.5/1.0 0.5/1.0 0.5/1.0 0.5/1.0	

Split-Core CT Product Offering (continued)

Part Number	Primary / Secondary Current	Max Current	Ratio	Accuracy Class	
KG-KCT24	200A/40mA	240A	1:5000	0.5	
	200A/40mA	240A	1:5000	1.0	
	400A/40mA	480A	1:10000	0.5	
	400A/40mA	480A	1:10000	1.0	
KG-KCT36	400A/80mA	480A	1:5000	0.5	
	400A/80mA	480A	1:5000	1.0	
	600A/60mA	720A	1:10000	0.5	
	600A/60mA	720A	1:10000	1.0	
KG-KCT58	200A/1A,5A	300A	1:200/1:40	0.5/1.0	
	300A/1A,5A	360A	1:300/1:60	0.5/1.0	
	400A/1A,5A	480A	1:400/1:80	0.5/1.0	
	500A/1A,5A	600A	1:500/1:100	0.5/1.0	
	600A/1A,5A	720A	1:600/1:120	0.5/1.0	
	700A/1A,5A	840A	1:700/1:140	0.5/1.0	
	750A/1A,5A	900A	1:750/1:150	0.5/1.0	
	800A/1A,5A	960A	1:800/1:160	0.5/1.0	
	1000A/1A,5A	1200A	1:1000/1:200	0.5/1.0	
	1200A/1A,5A	1440A	1:1200/1:240	0.5/1.0	
	1500A/1A,5A	1800A	1:1500/1:300	0.5/1.0	
KG-KCT812	500A/1A,5A	600A	1:500/1:100	0.5/1.0	
	600A/1A,5A	720A	1:600/1:120	0.5/1.0	
	700A/1A,5A	840A	1:700/1:140	0.5/1.0	
	750A/1A,5A	900A	1:750/1:150	0.5/1.0	
	800A/1A,5A	960A	1:800/1:160	0.5/1.0	
	1000A/1A,5A	1200A	1:1000/1:200	0.5/1.0	
	1200A/1A,5A	1440A	1:1200/1:240	0.5/1.0	
	1250A/1A,5A	1500A	1:1250/1:250	0.5/1.0	
	1500A/1A,5A	1800A	1:1500/1:300	0.5/1.0	
	1600A/1A,5A	1920A	1:1600/1:320	0.5/1.0	
	2000A/1A,5A	2400A	1:2000/1:400	0.5/1.0	
	2500A/1A,5A	3000A	1:2500/1:500	0.5/1.0	
	3000A/1A,5A	3600A	1:3000/1:600	0.5/1.0	
	4000A/1A,5A	4800A	1:400/1:800	0.5/1.0	
KG-KCT816	1000A/1A,5A	1200A	1:1000/1:200	0.5/1.0	
	1200A/1A,5A	1440A	1:1200/1:240	0.5/1.0	
	1500A/1A,5A	1800A	1:1500/1:300	0.5/1.0	
	1600A/1A,5A	1920A	1:1600/1:320	0.5/1.0	
	2000A/1A,5A	2400A	1:2000/1:400	0.5/1.0	
	2500A/1A,5A	3000A	1:2500/1:500	0.5/1.0	
	3000A/1A,5A	3600A	1:3000/1:600	0.5/1.0	
	4000A/1A,5A	4800A	1:4000/1:800	0.5/1.0	
	5000A/1A,5A	6000A	1:5000/1:1000	0.5/1.0	
	6000A/1A,5A	7200A	1:6000/1:1200	0.5/1.0	

Note: The Burden Resistor voltage should remain below 500mV at the CT's maximum secondary current. For additional information please contact KG Technologies.

General Purpose CT Product Offering

Description

KG Technologies works with our customers' design engineering teams to develop and manufacture optimal current sensors optimized for their applications.

When CT accuracy is not critical and the application is cost sensitive, we suggest incorporating lower cost silicon steel or ferrite (dual core) as an option. Then we design a Burden Resistor to meet a specific mV/Amp requirement. When a very high sensitivity is required, such as in-ground fault interrupters (GFI). We suggest current transformers with nano-crystalline ribbon material, which provide high permeability. When high current sensing is needed in combination with DC tolerance, a Rogowski coil is a good choice. Rogowski coils have an air core which prevents saturation problems. Because Rogowski coils are susceptible to external electromagnetic noise, we design them with a nickel or ferrite laminated magnetic shield. Rogowski coils exhibit reduced sensitivity at low current.

Our Zero sequence current transformers are used in applications where accurate measurements are required at very low current.

Application

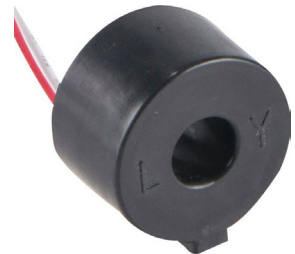
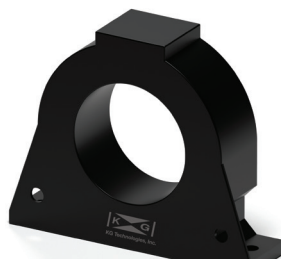
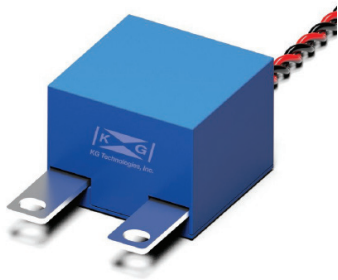
General purpose current transformers can be found in the following types of products: Power Distribution Units, Circuit Breakers, UPS, Residual Leakage Circuit Breakers, Leakage Protection Switches, Circuit Protection, Motors Protection, Earth Leakage Circuit Breakers, Ground Fault Circuit Interrupter, and Appliance Leakage Circuit Breaker Interrupter. Ground Fault Current sensors are used in Safety Outlets.

Features

- Accuracy options: 3% or 0.5%
- Embedded burden resistor
- From 1 to 1500 Amps
- Ground Fault Current Sensors
- Sensing from 400mA
- Minimum output voltage tolerance
- Close to zero load shift
- Lightweight, small size, strong insulation ability, moisture-proof and shock-proof
- RoHS compliant materials and processes
-

KG can design and produce CTs to your specific requirements.

Contact us at techinfo@kgtechnologies.net to discuss your application.



North America Corporate Headquarters

KG Technologies, Inc.
6028 State Farm Drive
Rohnert Park, CA 94928 - USA
Phone: +1 (888) 513-1874 (PST)
Email: techinfo@kgtechnologies.net

South America/ Asian Pacific Sales Office

Phone: +1 (888) 513-1874 (PST)
Email: techinfo@kgtechnologies.net

Mexico Sales Office

Phone: +1 (888) 513-1874 (PST)
Email: techinfo@kgtechnologies.net

African / Middle East Headquarters

KG Technologies, (Pty) Ltd.
49 Bergzicht Street
Malmesbury, WC, RSA, 7300
Phone: +27 (81) 562 5961
Email: techinfo@kgtechnologies.net
Email: info@kgtechnologies.net

India Sales Office

Phone: +91 981 0833005
Email: techinfo@kgtechnologies.net

European Headquarters

KG Technologies, Europe GmbH
AugustasträÙe 32
40721 Hilden - Germany
Phone: + 49 (172) 576 4795
Email: techinfo@kgtechnologies.net

France Sales Office

KG Technologies, Europe GmbH
Phone: + 33 (0) 646 572547
Email: techinfo@kgtechnologies.net

UK Engineering Office

KG Technologies, Europe GmbH
Phone: + 33 (0) 646 572547
Email: techinfo@kgtechnologies.net

Turkey Sales Office

KG Technologies, Europe GmbH
Phone: +33 (0) 646 572547
Email: techinfo@kgtechnologies.net

Corporate Headquarters

Hongfa Electroacoustic Co., Ltd.
Xiamen 361021 - China
Email: techinfo@kgtechnologies.net

HKG CT Factory

Zhoushan, Zhejiang Province - China
Email techinfo@kgtechnologies.net

Quality Standards



ISO 9001 / ISO 14001 - KG consistently delivers products and services that meet customer and regulatory requirements.



IATF16949 - The IATF is a standard that establishes the requirements for a Quality Management System (QMS), specifically for the automotive sector.



UL Recognition - KG products are recognized by the Underwriters Laboratories (UL).



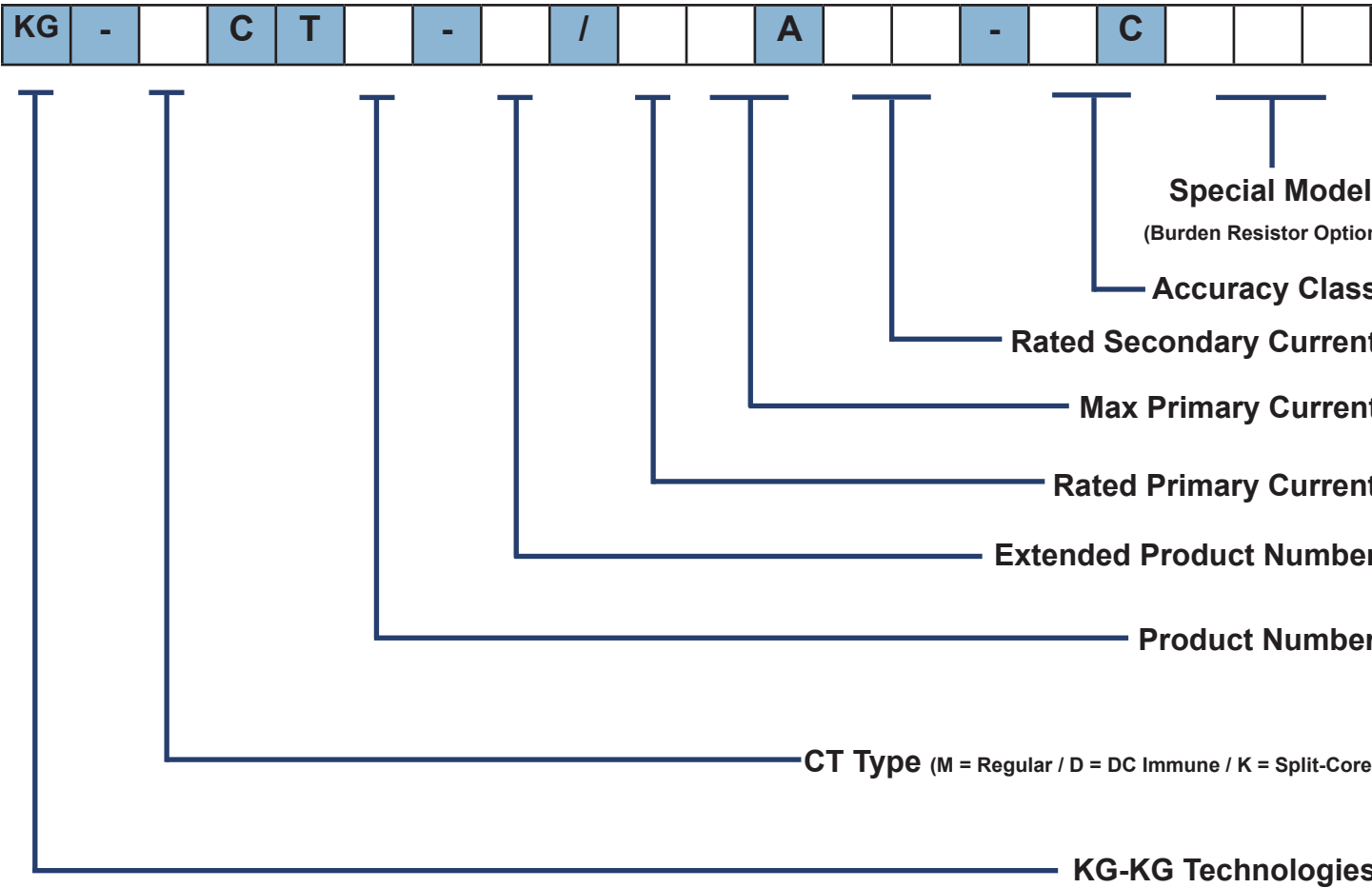
RoHS - KG conforms to the requirements of the RoHS directive (2011/65/EU) of the European Union Parliament and the latest amendments for their materials and processes. This directive specifies the restrictions of the use of hazardous substances in Electrical and Electronic markets in Europe.



REACH - The European Union's REACH Directive (EC 1907/2006) is designed to regulate the Registration, Evaluation, Authorization and Restriction of Chemical Substances.

Conflict Minerals Policy - KG is committed to support ending the violence and human rights violations in the mining of certain minerals from a location described as the "Conflict Region." In addition to our commitment, we must meet regulatory obligations. View our statement at www.kgtechnologies.net - Environmental Policies Page.

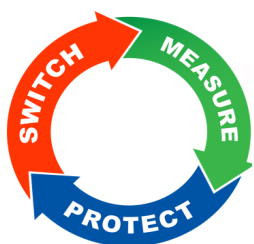
Part Number Coding



No reproduction of editorial or pictorial content without permission in any manner.
KG Technologies, Inc. reserves the right at all times to modify and improve specifications
without prior notification.



***We strive to provide our customers
with commitment, teamwork and respect!***



6028 State Farm Drive, Rohnert Park, CA 94928
Tel: +1.888.513.1874 Fax: +1.707.665.5966
Email: techinfo@kgtechnologies.net
www.kgtechnologies.net



Scan here for
more information